

# Children's World's Fair



**LCM** LOUISIANA CHILDREN'S MUSEUM

In the Louisiana Children's Museum's Learning Framework, a comprehensive document that guides all our decision-making, we have identified "Essential Experiences" that "allow children to become strong adults who are healthy, caring, and responsible." One of the five key essential experiences is "experiences that Expand a Child's World," connecting with others of varied backgrounds, abilities, and interests and giving a child a sense of place in the community, Louisiana, and the world.

Our annual Children's World's Fair is an extraordinary opportunity to allow children to connect with others of varied backgrounds and build broader perspectives about the many, many people in our global community.

LCM was counting down the days for our Children's World's Fair when the Stay-at-Home orders were received, and will, sadly, be unable to deliver our plans to you in person this year.

BUT – we have lots of fun we'd like you to explore – virtually – that will expand your world!



## Destination #1: Argentina



Capital: Buenos Aires

National Language: Spanish

Population: 44,694,198

Currency: Argentine peso



### Did you know?

- Argentina just built its very first sustainable school! More than half of the materials they used to build the school were recycled, like old car wheels, bottles, cans, and cartons.

**What can you find in your recycling bin that can be reused for something else?**

- Eyal Weintraub is an 18-year-old climate activist from Argentina. That means he believes if the people of the world come together we can solve global problems like hunger and global warming.

**Take the first step and talk to your family and friends about how the problem of global warming might be fixed.**



**Connections  
at Home**



## Fun Facts

- The **tango** is a dance invented in Buenos Aires, the capital of Argentina. It has quickly spread across cultures as one of the most popular forms of dance in the world.
- There is a cave in Argentina that is covered in murals created over 9,000 years ago. **Cuevas de los Manos (Cave of the Hands)** shows how people born thousands of years ago used art to tell stories and leave messages for each other.
- The **Andes Mountains** are the longest mountain range in the world, spanning seven South American countries and covering the entire Argentinian-Chilean border. The people who live there love these mountains for their beauty and the wide variety of climates they offer.

## Home Activity

### DINOSAUR DISCOVERY



Argentina is a “hot spot” for dinosaur fossil finds. In 1987, the largest dinosaur at the time was discovered in Argentina. It was over 100 feet long and was named Argentinosaurus.

Pretend **YOU** were the first person to discover a brand new species of dinosaur!

- What do you want to name your dinosaur discovery? Do you want to name it after yourself, or where you found it, or after something else?
- Draw a picture of your dinosaur. Is it big or small? Does it walk on four legs or two legs? What color is it?
- What does your dinosaur like to eat? Draw a picture of all the foods your dino enjoys – is it a herbivore (eating only plants), carnivore (eating only animals), or an omnivore (eating plants and animals)?

To learn more about Argentina, visit:

[www.kids.nationalgeographic.com/explore/countries/argentina](http://www.kids.nationalgeographic.com/explore/countries/argentina)



Children's  
World's Fair



Connections  
at Home



LCM LOUISIANA  
CHILDREN'S  
MUSEUM

CARE • ENGAGE • LEARN • PLAY

We would like to thank our very generous sponsors and supporters who turn this incredibly content-rich event into a fundraiser.

We appreciate the support of:

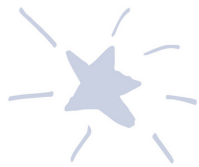


## Sponsors & Patrons

ADVENTURER & STEM SPONSOR  
BP

EXPLORER SPONSORS  
Cox and Telefe  
Freeport-McMoran, Inc.  
Pan-American Life Insurance Group

TRAVELER SPONSORS  
GE New Orleans  
International-Matex Tank Terminals  
Laitram, LLC



BACKPACKER SPONSORS  
Adams and Reese, LLP  
The Domain Companies  
Alexa Georges and Jerry Armati  
LUBA Workers' Comp

AMBASSADOR  
Baptist Community Ministries

CONSULAR CORPS  
Lauren & Jeffrey Doussan and Keller Williams  
Realty New Orleans  
The Garris Family

FOREIGN SERVICE  
Joel Daste / Patty and John Elstrott /  
Uncle Sam Auto Repair

## Argentina Committee

Special thanks to this year's Event Chair, Sandra Pierre-Kazi, and to the volunteers who so capably worked to identify the best ways you can learn more about Argentina.

**Co-Chairs: Millie Baudier, Raiza Pitre**

Terry Carter  
David Comesaux  
Lauri Daunoy  
Dontrail Dobison  
Claudia Ginty  
Henry Ginty  
Mike Glorioso  
Carlos Lagos  
Colleen Levy  
Megan Levy

Darren Minor  
Cyla Muhammad  
Karla Ortiz  
Luis Parada  
Gabriel Pitre  
Isabella Pitre  
Troy Roussel  
Justin Soileau  
Sharon Truxillo  
Kelly Wathen

A World of Thanks  
Cox Communications  
Jambalaya News Louisiana  
NOLA Fleaux



Children's  
World's Fair



Connections  
at Home



LCM LOUISIANA  
CHILDREN'S  
MUSEUM

CARE • ENGAGE • LEARN • PLAY